

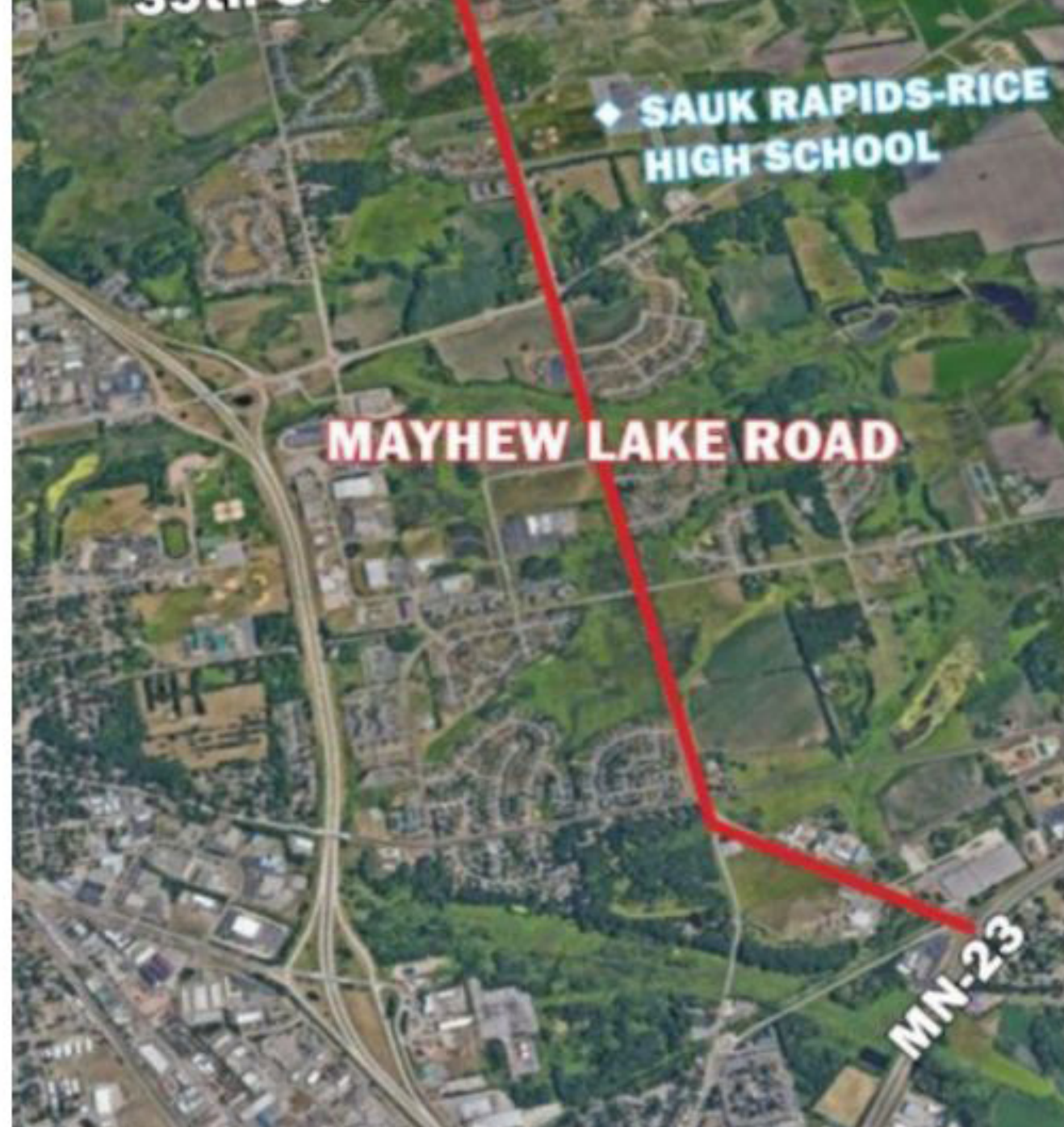
Safety Study for Mayhew Lake Road Begins

Recently, some notable crashes have occurred on Mayhew Lake Road in the northeastern part of the region. The corridor serves as the primary access for the Sauk Rapids-Rice High School and also lies in the heart of the fastest growing part of Sauk Rapids. For these reasons, Benton County recently approached the APO to conduct a safety and access study for Mayhew Lake Road from 35th Street NE to MN-23.

The APO contracted with WSB & Associates, a planning, engineering, and design firm, to assess safety issues that exist today and to forecast future traffic conditions and assess the corridor for potential safety concerns in the future.

As part of the planning process, WSB will be soliciting public input and comments to learn more about the individual experiences of people who use the corridor. The public input period should occur in May. Your input can help shape the recommendations of the study and impact how the corridor will be developed in the future.

If you are interested in providing your comments or input, or if you just want to learn more about the study as it progresses, we invite you to visit the [study webpage](#).



APO Awards Federal Funding

The APO's Policy Board has awarded just over \$2.1 million in Federal funding assistance to Stearns County to aid in the replacement of the Sauk River bridge on CSAH 75. At its March 10 meeting, the Policy Board agreed to allocate all of the APO's available Federal funding through the Surface Transportation Block Grant Program (STBGP) to this project.

Bridge 6819 over the Sauk River – located just west of Fleet Farm in Waite Park – was originally constructed in 1954. Within recent years, portions of this bridge have reached a point where minor repairs are no longer feasible. Due to the high vehicle traffic usage of this bridge, the county was concerned about load restricting this facility – which would have the potential to reroute heavy truck traffic through areas with neighborhoods and schools. The APO has awarded \$2,135,120 in Federal funding assistance for this approximately \$4 million project.

The Stearns County project was selected from a total of three projects from around the region. The other two projects included the City of Sartell's proposed 15th Street N corridor extension from Pinecone Road to 19th Avenue N and Benton County's CSAH 3 (Golden Spike Road NE) reclamation from Mayhew Lake Road/CSAH 1 to County Road 44/55th Street NE.

Stearns County plans on reconstructing this bridge in 2023.

Stearns County - CSAH 75 Bridge Project



LOOKING AHEAD 2050

One of the key responsibilities of the APO is to develop a regional long-range, multimodal surface transportation plan. Known as the Metropolitan Transportation Plan (MTP), this document outlines a transportation vision for the future along with recommendations for transportation projects to improve our existing network over the next 25 years.

The last MTP – MAPPING 2045 – was approved by the APO's Policy Board in October 2019 and must be updated every five years. Work is currently underway on the next version of the long-range plan, Looking Ahead 2050.

APO staff want to thank those of you who participated in our visioning process last fall.

Between December 2021 and January 2022 APO staff reviewed nearly 1,200 responses from the SurveyMonkey, the APO's Regional Household Travel Survey, and various engagement events. APO staff are in the process of finalizing an initial draft of the region's transportation priorities based upon the responses received. This draft is anticipated to be presented to members of the APO's Technical Advisory Committee (TAC) – a committee made up of local city and county planners and engineers – at the end of the March before being discussed at the April Policy Board meeting.

In addition to working on the vision for Looking Ahead 2050, APO staff have been continuing to gather information on the existing transportation network – including population demographics, traffic volumes, crash rates, transit ridership.

Additional public input opportunities on the development of the APO's next long-range plan are anticipated to occur later this year. To stay up to date on the APO's MTP activities visit www.lookingahead2050.org.

TIP Changes Need Your Input

There is still time to provide your input on proposed changes to the APO's fiscal years [2022-2025 Transportation Improvement Program](#).

The Transportation Improvement Program (TIP) is a multi-year program of transportation improvements for the Saint Cloud Metropolitan Planning Area (MPA). As a document, the TIP reports on how the various agencies and jurisdictions within the MPA have prioritized their use of limited Federal highway and transit funding.

The Minnesota Department of Transportation (MnDOT) is requesting two changes to the TIP impacting this year's construction season. Those changes include increasing the project cost for the MN 301 roadway construction and WPA wall preservation and the addition of replacing a Dynamic Messaging Sign at the interchange of I-94 and CSAH 75 near McStop.



An in-person public input meeting is scheduled for 11:30 a.m. to 1:30 p.m. on Thursday, March 17 at the St. Cloud library. To find out more information about these proposed changes or to participate in our online survey check out the [APO's website](#). **The public comment period is open through 5 p.m. Friday, March 25.**



JURISDICTIONS WE SERVE

- Benton County
- Sherburne County
- Stearns County
- LeSauk Township
- City of Saint Cloud
- City of Saint Joseph
- City of Sartell
- City of Sauk Rapids
- City of Waite Park
- Saint Cloud Metro Bus

