

Looking Ahead 2050 Visioning Process Underway

It's not too late to share your transportation experiences with us.

Since Aug. 9, APO staff have been asking area residents to provide their comments about transportation in the Saint Cloud metro.

But the deadline to provide feedback – Sept. 10 – is quickly approaching.

Comments and stories received by the deadline will be used as APO staff work to develop a transportation vision for where the Saint Cloud area should be headed by 2050. This vision will then help guide the development of the APO's next long-range, multimodal surface transportation plan – Looking Ahead 2050.

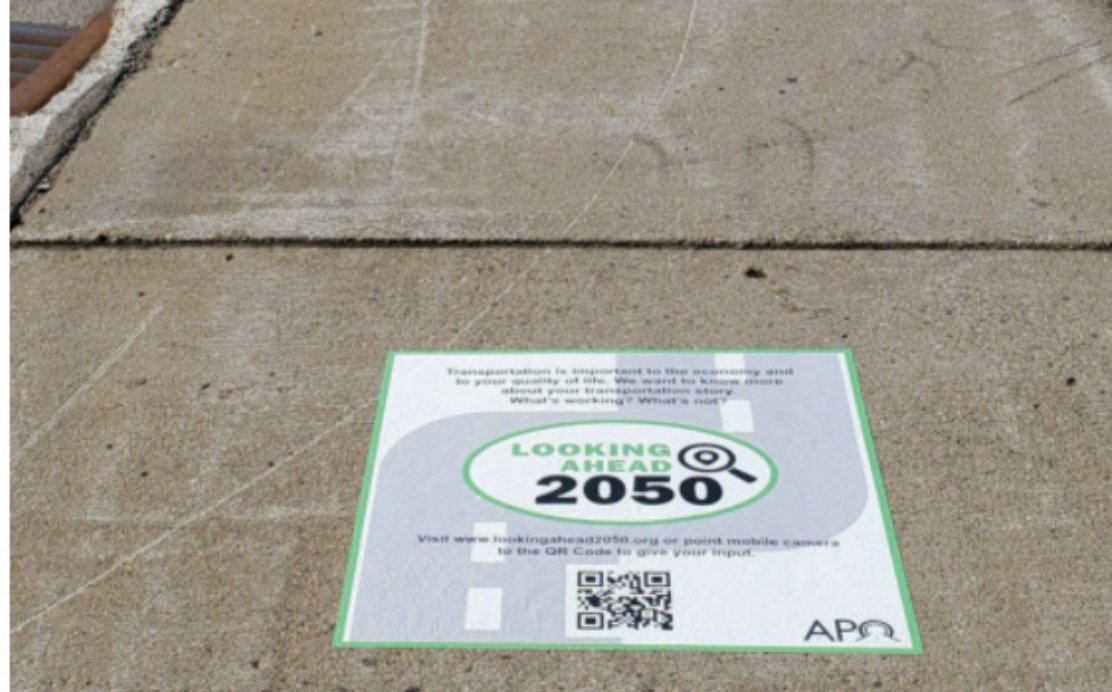
APO staff want to know two things: What's been working great so far? What's something that we need to work on to improve your transportation experience both now and in the future?

"We collect a lot of data about transportation performance," said APO Executive Director Brian Gibson. "But while we are analyzing the averages, means, and general trends, the individual experiences of residents can get lost in the 'noise' of the data. We hope people will be willing to share with us their experiences and stories to help us paint a more complete picture about how the transportation networks – including roads, buses, bicycle paths, and sidewalks – are helping or hindering their lives."

If you are still interested in participating in the transportation visioning process, APO staff have developed a website – www.lookingahead2050.org – with information pertaining to the visioning process and how to provide comments online. In addition, residents can also provide their comments by emailing Senior Transportation Planner Vicki Johnson at ikeogu@stcloudapo.org or contacting the APO Office at 320-252-7568.



Help us LOOK AHEAD to 2050, today!



In October, area residents will begin receiving letters asking them to join our household travel survey.

A travel survey records the trip-making behavior of household members for a specified period of time. Of course, these days there is an app for that. Those selected for the survey will have the option to download the rMove app (<https://rmove.rsginc.com/>) which will automatically record trips made throughout the day. However, the participant can still review and verify that the captured information is correct. If a participant cannot or does not want to use the app, they will have the option to complete their travel survey online or by telephone. A small incentive reward will be offered to participants who successfully complete the survey.

Households will be selected randomly from a database of mailing addresses. In all, we hope to collect data from about 1,000 households across the region representing all ethnicities and levels of income.

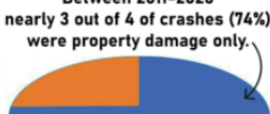
Travel surveys are an important source of data for transportation planners. Knowing where people are going, why, and how often helps us better plan for transportation needs both now and in the future. If you receive a letter inviting you to complete our household travel survey, we encourage you to participate.

As always, if you have any questions, please do not hesitate to contact the APO office.

Crash Statistics

- The 5-year rolling average (2016-2020) of chemical impairment crashes accounted for 3.3% of total crashes.
- The 5-year rolling average (2016-2020) of distracted crashes accounted for 6.8% of total crashes.

Between 2011-2020 nearly 3 out of 4 of crashes (74%) were property damage only.



Nobody was injured in a property damage only crash.

Between 2011-2020 1 out of 4 fatal crashes (28.9%) involved an active transportation user.



Active transportation describes all human-powered forms of travel, such as walking, cycling, and skateboarding.

Get Involved with Saint Cloud APO



JURISDICTIONS WE SERVE

Benton County
 Sherburne County
 Stearns County
 LeSauk Township
 City of Saint Cloud
 City of Saint Joseph
 City of Sartell
 City of Sauk Rapids
 City of Waite Park
 Saint Cloud Metro Bus



Copyright © 2021 Saint Cloud APO, All rights reserved.

Our mailing address is:
 1040 County Road 4
 Saint Cloud, MN 56303-0643

Saint Cloud APO Executive Director: Brian Gibson
 Chair of the Saint Cloud APO Policy Board: Joe Perske

If you wish to unsubscribe from this newsletter reply to this email UNSUBSCRIBE.